



COMMUNITY
FOUNDATION
GREY BRUCE



We're here for good.

VitalSigns®

VITAL FOCUS ON YOUTH

"This was a fantastic opportunity for our class and we all learned a great deal of valuable skills and information that we can apply to both our class and future business ventures. After hearing all of the influencers talk about their involvement in the initiative, as well as how they hope it will benefit the community, it was very clear that everyone involved in this event was keen on seeing youth – the future of our world – succeed and we are very grateful for the opportunity to have worked with them at this fantastic event!"

Emma Donneral,
Collingwood Collegiate Institute's
Entrepreneurship Student

One of the highlights of the past year was the launch of our Vital Focus on Youth Report on April 12. Huge thanks to our *Vital Signs*® Advisory Committee for their support and investment in this important report which builds on previous work with local youth and Vital Conversations held in 2017. The report and the launch day were sponsored by RBC Future Launch. The culmination of the launch day was a presentation by Arlene Dickinson held at East Ridge Community School. It was candid, engaging and inspiring for the many young entrepreneurs in the audience of 750.

Behind the scenes this past year, our finance staff has been working diligently on a conversion of our office systems and accounting software to a product newly available in Canada called Foundant Community Suite. Our granting software also converted to Foundant's Grant Lifecycle Manager. Being one of the first foundations in Canada to adopt the new software, we have been on the vanguard of experimentation and change for our sector in Canada. The new system offers many efficiencies in relation to income sharing function and will give fundholders more up-to-date information. The system comes with a robust Customer Relationship Management function which will give us new tools in terms of managing your information and communicating with you. Special thanks to Joe and Marilyn Hunt and the Eva Leflar Endowed Fund for supporting our initial purchase of Foundant.

Last year, our Foundation continued to support the Great Lakes One Water Project partnering with Community Foundations in Canada and the United States towards better protection of our freshwater resources in the Great

Lakes. Community Foundation Grey Bruce is engaged with two foundations from Michigan as part of the Lake Huron basin team. This group will be focused on nature-based solutions to storm water management as outlined in the project's Action Agenda. The project will kick into implementation stage in the year ahead.

Finally, we acknowledge a milestone as Community Foundation Grey Bruce celebrates its 25th Anniversary in 2019-2020. The year of celebrations kicked off in June with the launch of our Next25 Fund. While acknowledging

our history, we look forward to the future. To kickstart this effort, present and former members of the Board of Directors, along with a few key fundholders have already contributed to get the ball rolling. Thank you to these visionaries who understand the importance of community and want to provide for continuing health and prosperity in our region. The Next25 Fund will provide future grants to charities and non-profits with projects that address priorities that are identified in our *Vital Signs*® report.

We acknowledge some transitions over the past year. We said goodbye to Brenda O'Neill, who moved on to a new position with the Owen Sound Hospital Foundation, and we welcomed Sarah Haefling into her role as Community Outreach Officer. We also offer huge thanks to Kimberley West-Briggs who stepped in the role of Board Chair from March to August while Maureen Solecki was on a leave of absence.

On behalf of the Board, Staff and Ambassadors of Community Foundation Grey Bruce, we thank you for your ongoing support. Together we make Grey Bruce a vibrant and thriving community.



Board of Directors 2018- 2019



Brian Davenport



Donna Elliott



Kerina Elliott



Cheryl Ann Hynds



Terry King



Kerry Lee



Gail Norris



Martha Pedoniouotte



Maureen Solecki, Chair



Ronald Todd



Dave Waddington



Kimberley West, Past Chair

Our Staff



L to R: Sonya Mount, Accountant; Sarah Haefling, Community Outreach Officer; Stuart Reid, Executive Director; Wendy Bachiu, Grants Coordinator; and Kate Baker, Bookkeeper.

Maureen Solecki, Chair

Stuart Reid, Executive Director

The Vital Focus on Youth Report digs deep into the “issue clusters” that Grey Bruce youth brought forward in our Vital Conversations held in late 2017. The report pulls together data from a variety of sources on topics that youth identified as the most important to them.

Sponsored by RBC Future Launch, the launch day for the Vital Focus Report featured a personal branding workshop that encouraged 50 local youth to interact, discuss and participate in conversations on personal branding. The afternoon featured a keynote by marketer and tech journalist, Erin Bury, who discussed whether people are born or made entrepreneurs.

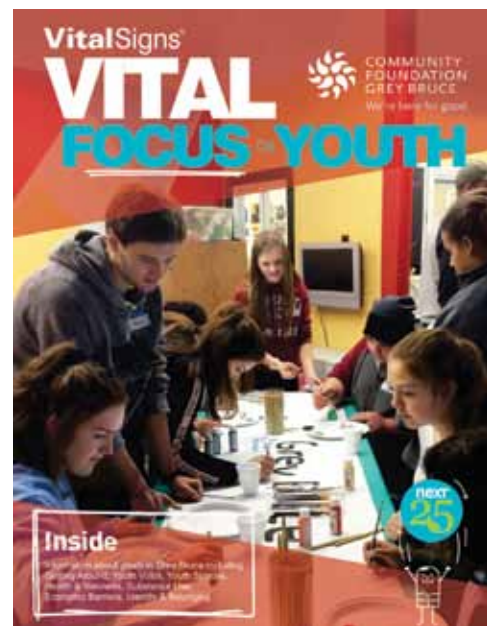


Erin Bury chats with youth.

Bury's talk was supported by Grey County and the Business Enterprise Centre. Erin then moderated a panel discussion with six local entrepreneurs: Drew McIver, CanDairy Inc.; Carlene Keeshig, Chippewas of Nawash Unceded First Nation; Charlee Roy, NakdBasics; Emily Morrison, Launch Pad Youth Activity & Technology Centre; Brandon Koebel, Municipal Councillor of Hanover; and Patrick Famaran, RBC Youth Social Impact. The conversation was inspiring. The day was capped off with a sold-out lecture by Dragon's Den star, Arlene Dickinson, at East Ridge Community School. Arlene spoke for over two hours on entrepreneurship, women in business, leadership, and describing how she got to where she is today. Following the talk, information booths from various local organizations engaged with youth were set up in the atrium.



RBC staffers lead the branding workshop.



L to R:
Kim West-Briggs,
Arlene Dickinson,
Sarah Haefling

New Endowment & Education Funds

Don Hill Legacy Environmental Project Endowed Fund

Supports an award distributed annually through Ontario Soil & Crop Improvement Association

Don & Marlene Ische Endowed Fund - Provides scholarships for Grey Bruce students

Institute of Southern Georgian Bay Endowed Fund - Supports four pillars of a healthy sustainable community as defined by the Institute of Southern Georgian Bay

Lake Huron Learning Collaborative Endowed Fund - Supports access to post-secondary education for students in Bruce and Huron counties

McKee Family Fund - Supports preservation, awareness and celebration of Owen Sound's unique built heritage

Richard Fujiki & Joan Corbett-Fujiki Caring Support Endowed Fund - Providing counselling & training for Chapman House Residential Hospice of Grey Bruce staff

Robert & Nancy Legge Family Endowment Fund - Supports Grey Bruce Health Services, Chapman House Residential Hospice of Grey Bruce and other areas as advised by the donor

St. George's Anglican Church Architectural Preservation Endowed Fund - Supports the architectural preservation of St. George's Anglican Church, Owen Sound

The Next 25 Fund - For strategic granting based on priorities identified by Vital Signs®

Community Foundation Grey Bruce Balance Sheet

December 31	2018	2017
Assets:		
Current		
Cash	\$ 126,463	\$ 95,575
Investments	15,205,892	16,034,053
Cash Surrender Value of Life Insurance	7,820	11,772
Accounts Receivable	18,812	15,615
Prepaid Expenses	1,378	1,243
	<u>\$15,360,365</u>	<u>\$16,158,258</u>
Liabilities and Fund Balances:		
Current		
Accounts Payable	\$ 10,186	\$ 8,693
Fund Balances		
Externally Restricted		
Endowments	14,737,684	14,057,931
Donor Restricted	377,894	1,695,604
Operating	234,601	396,030
	<u>15,350,179</u>	<u>16,149,565</u>
	<u>\$15,360,365</u>	<u>\$16,158,258</u>

Audited statement, prepared by BDO Canada LLP, available online at www.communityfoundationgreybruce.com

Thank You To Our Volunteers



Long serving Ambassadors, Lyle Love and Ovid Jackson, accept Ontario Volunteer Service Awards for 25 years of service to the Foundation.

Special thanks to our Ambassadors who are the Foundation's champions in communities across Grey Bruce. These special folks are engaged with philanthropy in their own neighbourhoods by introducing new friends to the Foundation, spreading the word about what the Community Foundation can do for them. They also help celebrate the work of local charities and non-profits by supporting our Road Show and pop-up granting events. The Foundation hosts two Ambassador Forums each year – networking opportunities to share resources, hear about updates and brainstorm various marketing strategies. If you are interested in an Ambassador role, please contact the Foundation.

Road Show 2019

At a glance:

- 27 stops
- 18 communities visited
Clarksburg, Chesley, Dundalk, Durham, Hanover, Kilsyth, Kimberley, Kincardine, Markdale, Meaford, Mildmay, Neyaashiingmiing, Owen Sound, Paisley, Ripley, Thornbury, Walkerton and Wiarton

2019 Grant Distribution:

- \$129,000 in community grants to 55 charities
- \$81,000 in donor-advised grants
- \$20,000 in scholarships & bursaries



Mercedes Battler, Canada Summer Jobs Intern, and Community Outreach Officer, Sarah Haeffling hit the road.



Road Show grant presentation to the Owen Sound Emancipation Festival.

Community Funds

A Community Fund differs from a regular endowed fund in that it has been created to support projects in a specific municipality in Grey or Bruce County. The grants from each Community Fund are disbursed only to projects within that municipal boundary. Community Funds are managed by a volunteer team, including a representative from its municipality, and exist to enrich the quality of life for the people of that municipality by supporting projects of not-for-profit charitable organizations involving affordable housing, food banks, agriculture, recreation, seniors and education. Community Foundation Grey Bruce holds 5 Community Funds for Grey Highlands, Meaford, Owen Sound, Kincardine and Saugeen Shores. Our Community Fund advisory groups support Random Act of Kindness Day through a range of activities that celebrate kindness and community!

Spotlight on Endowed Funds

Many communities across both Grey and Bruce Counties have experienced growth in the past years meaning there is a demand on the construction, industrial, motive power and service industries. Need for workers in these trades will only increase in the future as the working population retires. Three funds have been created to encourage local students to pursue the trades as their career as well as guarantee a workforce for the future. The Grey Bruce Homebuilders and Trades Association Endowed Fund, the Saugeen Home Builders Trade Association Endowed Fund and the Lyle & Isabelle Love Skilled Trades Apprenticeship Fund each have bursaries for male or female students who are entering the trades after high school.



Supporting hands-on experience in the skilled trades.

Fifteen students have so far received a bursary. Impactful visionary granting sets sights on a positive future in the region!



Donna Beatty of the Owen Sound Community Fund celebrates Random Act of Kindness Day.






**COMMUNITY
FOUNDATION
GREY BRUCE**

We're here for good.

Mail: P.O. Box 81, Owen Sound, ON N4K 5P1
Phone: 519.371.7203 **Email:** foundation@cfgb.ca
Website: communityfoundationgreybruce.com

Charitable Registration #14103 6228 RR0001

 Community Foundation Grey Bruce  @cfgreybruce  @communityfoundationgreybruce

With appreciation, we thank our sponsors:



**COMMUNITY
FOUNDATIONS
OF CANADA**
all for community

